

Technical Specifications

Materials	Cast iron.
Connections	½" flow and return bottom opposite end.
Test pressure	12 Bar
Testing authority	EN442
Maximum operating pressure	6 Bar
Maximum working temperature	120°C
Packaging	In primer finish, product will be strapped on a pallet If product has been painted, it will be supplied wrapped in bubble wrap and strapped on a pallet

PLEASE NOTE: Systems using micro bore pipework must have adequate pressure and flow rates for the number and style of radiators on the system.

Terms & Conditions

All products must be inspected once removed from the packaging and The Radiator Company notified within 28 days of delivery of any scratches, blemishes or other damage. The Radiator Company will then replace the radiator.

Imperfect radiators should therefore not be fitted and The Radiator Company will not accept responsibility for replacement of scratched or damaged radiators once they have been fitted. This includes any consequential loss or cost of fitting.

If The Radiator Company are not notified within 28 days of the date on the signed delivery note then it will be deemed that The Radiator Company have fully complied with its obligations and claims will not be considered.

Failure to comply with any of the above may invalidate any claims.

We recommend that after you check the product on delivery that it is stored in its packaging to prevent damage prior to installation. The Radiator Company cannot accept responsibility for items damaged after delivery.

Guarantees & Liabilities

As we are not the manufacturers of this product we will take all reasonable endeavours to make over to you the benefit of any warranty or guarantee given by the manufacturer, which is usually five years on most of our range. (Copies of specific guarantees for any of our products are available on request).

The guarantees in all cases are subject to the products being installed in accordance with British and or European standards as well as these fitting instructions. The guarantees in all cases are restricted to the free of charge replacement or repair of the failed product only. Our liability will under no circumstances extend beyond the repair or replacement of the product supplied by us. Claims for either labour in replacement or damage to property are not admissible. Any goods that are returned, in the event of a problem, will belong to The Radiator Company.

Please Note: We strongly recommend flushing the heating system post installation of new radiators and then adding the correct quantity and type of inhibitor for use with your radiator and system to prevent corrosion. Damage caused to systems not protected by a suitable inhibitor will not be covered by manufacturer's guarantee.

Fittings Instructions



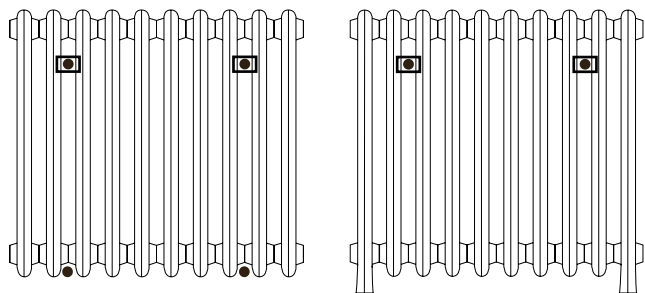
The round top sections of the Telford feature a solid centre between the columns, providing bigger outputs a more robust style.

Please read these instructions and terms and conditions carefully prior to installation. Failure to do so may invalidate the warranty.

The Radiator Company
Units 13 - 14 Charlwoods Road
East Grinstead
West Sussex
RH19 2HU



Telford Diagrams

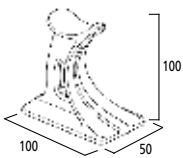


● = typical foot positions

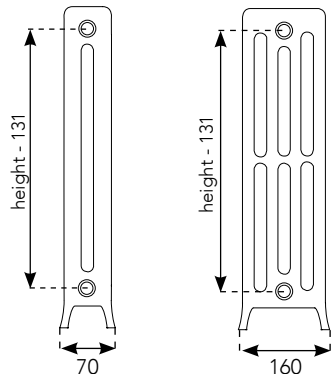
◻ = typical wall tie positions

Telford mounting options

Cast Feet



Footed End



Pipe Centres

Pipe centres left to right

60mm x total number of sections + 30mm for bushes + valves.

Pipe centres from wall

2 column = 85mm to 105mm (as wall ties are adjustable)

3 column = 105mm to 125mm (as wall ties are adjustable)

4 column = 130mm to 150mm (as wall ties are adjustable)

5 column = 160mm to 180mm (as wall ties are adjustable)

6 column = 175mm to 195mm (as wall ties are adjustable)

1 Inspect

The Radiator Company prides itself on selecting products from manufacturers who exercise tight quality control measures. We only select models with excellent standards of welding and brazing, as well as high quality finishes. All of our products are well packaged and should reach you in perfect condition. Just in case however, we offer a 10 year no quibble guarantee for all cast iron radiators.

Please carefully unpack and inspect this radiator and all fittings. The Radiator Company must be notified of any shortages or damage within 28 days of delivery. For further information please see terms and conditions on back page.

Please note: after manufacture these radiators are pressure tested and cleaned inside with water, as a result they may, therefore, contain a small amount of residual water which may be subject to discoloration. This will not adversely affect the performance of the radiator once installed. If handling on a finished floor ensure that adequate protective material is in place before working on the radiators.



2 Contents

For radiators 3 - 15 sections you should have

- 1 Radiator
 - 3 Bushes (Gaskets are fitted on the Bushes)
 - 1 Blanking Bush
 - 1 Air vent
- Plus either
- 2 Cast feet & 2 wall ties
 - 3 Wall brackets & 2 wall ties
 - Footed End: 1 - 3 Wall Ties

For radiators 16 - 25 sections you should have

- 1 Radiator
 - 3 Bushes (Gaskets are fitted on the Bushes)
 - 1 Blanking bush
 - 1 Air vent
 - 1 Joining key, if requested
 - 2 Nipples per join
 - 2 Gaskets per join
- Plus either
- 3 Cast feet & 3 wall ties
 - 4 Wall brackets & 3 wall ties
 - Footed End: 3 - 5 Wall Ties

For radiators 26 - 40 sections you should have

- 1 Radiator
 - 3 Bushes (Gaskets are fitted on the Bushes)
 - 1 Blanking bush
 - 1 Air vent
 - 1 Joining key, if requested
 - 2 Nipples per join
 - 2 Gaskets per join
- Plus either
- 4 Cast feet & 4 wall ties
 - 6 Wall brackets & 4 wall ties
 - Footed End: 5 - 8 Wall Ties

3 Joining Sections If Required

If you require joining sections, please see the separate instructions provided.

4 Fitting Bushes - IMPORTANT NOTE

Cast Iron radiators have specific left and right hand threaded bushes and these can be easily damaged if forced or incorrectly fitted (this will inevitably cause leaks). **Bushes require a dry fit connection only; you must not use any Compound materials (e.g. Jet Blue) or Plumbers Hemp.** If you choose you may use up to 4 turns of PTFE tape to help seal the threads (the tape should be applied in the direction of the thread and no more than this amount should be used as this may cause leaks to occur).

5 Marking Wall Ties & Wall Brackets

Cast Feet and Footed End

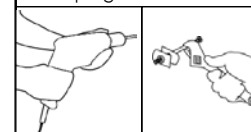
Place the assembled radiator in its final position. If using floor mounts, these are typically positioned one section in from either end with extra floor mounts spaced equally throughout if supplied. With the radiator supported on the floor mounts, carefully rest the radiator against the wall and using a pencil mark the desired wall tie positions accurately between the sections.

Wall Mounted

Wall mounted radiators can either sit on, or hang from the wall brackets. It is essential that the positions for these brackets are accurately measured and level as there is no allowance for any vertical or horizontal adjustment once fitted. Like floor mounts, wall brackets are typically positioned one section in from either end with extra wall brackets spaced equally throughout if supplied.

6 Fixing Wall Ties & Wall Brackets

With the positions accurately marked drill and fix the wall ties or wall brackets. Wall brackets must only be used in masonry with the supplied wall plug.



Wall ties can be screwed into wood or used in masonry with a suitable wall plug.

7 Painting Radiators

If your product is supplied in a primer finish it will require painting to create an appropriate finish.

With wall brackets and ties fixed in their final position the primed radiator can be removed and painted. Specialist radiator paint and long handled radiator brushes are widely available in high street DIY outlets.

When painting your radiators topcoats and undercoats must NEVER be WATER BASED or EMULSION type. Be careful in selecting undercoats as some modern formulations are water based even though they are intended for use with oil based topcoats. Water based paint will create rust pockets that will grow and become unsightly. Radiators may be finished with paints that are formulated to withstand temperatures up to 100°C. Spray paints used for car bodywork are also suitable if they are not water based. Paint odours may be emitted during painting and when the radiator heats up for the first few times. Adequate ventilation should be provided.