

Technical Specifications

Materials	Steel.
Connections	½" flow and return.
Test pressure	8 Bar
Testing authority	EN442
Maximum operating pressure	6 Bar
Maximum working temperature	90°C
Packaging	Cardboard protection and shrink wrapped in polythene.

Terms & Conditions

All products must be inspected once removed from the packaging and The Radiator Company notified within 28 days of delivery of any scratches, blemishes or other damage. The Radiator Company will then replace the radiator.

Imperfect radiators should therefore not be fitted and The Radiator Company will not accept responsibility for replacement of scratched or damaged radiators once they have been fitted. This includes any consequential loss or cost of fitting.

If The Radiator Company are not notified within 28 days of the date on the signed delivery note then it will be deemed that The Radiator Company have fully complied with its obligations and claims will not be considered.

Failure to comply with any of the above may invalidate any claims.

We recommend that after you check the product on delivery and that it is stored in its packaging to prevent damage prior to installation. The Radiator Company cannot accept responsibility for items damaged after delivery.

Guarantees & Liabilities

As we are not the manufacturers of this product we will take all reasonable endeavours to make over to you the benefit of any warranty or guarantee given by the manufacturer, which is usually five years on most of our range. (Copies of specific guarantees for any of our products are available on request).

The guarantees in all cases are subject to the products being installed in accordance with British and or European standards as well as these fitting instructions. The guarantees in all cases are restricted to the free of charge replacement or repair of the failed product only. Our liability will under no circumstances extend beyond the repair or replacement of the product supplied by us. Claims for either labour in replacement or damage to property are not admissible. Any goods that are returned, in the event of a problem, will belong to The Radiator Company.



Volcano horizontal

Fittings Instructions

Includes new Aladdin
Autovent fittings
instructions

Automatic Radiator Bleed Valve



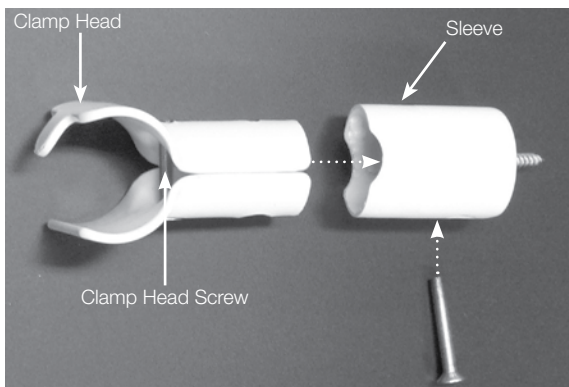
The Volcano is a design exclusive to The Radiator Company and its patented tube delivers incredible output for its size. The output versus price is unmatched.

Please read these instructions and terms and conditions carefully prior to installation. Failure to do so may invalidate the warranty.

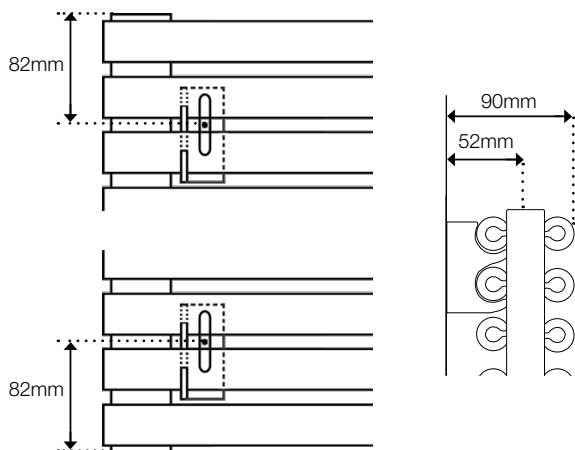
The Radiator Company
TRC House
Units 13 - 14 Charlwoods Road
East Grinstead
West Sussex
RH19 2HU

Diagrams of Volcano Horizontal

Volcano Single Bracket



Volcano Double Fixing Positions



Pipe Centres

	Single	Double
Pipe centres left to right	width - 36mm	width - 36mm
Pipe centres from wall	70mm - 75mm	52mm
Depth from wall	107mm - 112mm	90mm

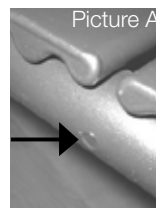
1 Unpack & Inspect

The Radiator Company prides itself on selecting products from manufacturers who exercise tight quality control measures. We only select models with excellent standards of welding and brazing, as well as high quality finishes. All of our products are well packaged and should reach you in perfect condition.

Please carefully unpack and inspect this radiator and all fittings. Please check that the collectors are open and clear, there should be no diverters present. A diverter can be located inside one collector, (usually marked with a small indentation, see picture A, right) simply remove plugs and look down the collector, you should be able to see through to the other end. If a diverter is present remove with an appropriate long handled Allen key. If an appropriate key is not available call us on 01342 302250 and we will arrange one to be sent out.



The Radiator Company must be notified of any shortages or damage within 28 days of delivery. For further information please see terms and conditions on back page.



2 Contents

You should have:

- 1 Radiator
- 4 Wall brackets
- 1 Aladdin Autovent HV30 Valve
- 1 Aladdin Blanking Plug, if your radiator requires a plug

You will need:

- Tape measure
- Electric drill and bits
- Spirit level

3 Mark Bracket Positions

Volcano Single

Volcano single uses four clamps which can be positioned as required up and down the collectors, preferably two tubes in from top & bottom.

- Lightly fix the clamp heads to the sleeve and then secure the head in position on the collector.
- Hold the radiator in position and ensuring it is level mark the location of the 4 bracket sleeves.
- Remove the sleeve from the clamp heads. Using the marked position on the wall take a sleeve and mark the central hole.

Volcano Double

The fixing positions for the two top brackets are measured down 82mm and spaced left to right as required along the cross tubes within the collectors (please see diagram left).

In order to accurately mark the bottom bracket fixing positions we recommend you mark, fix and level the two top brackets first. Then hang the radiator, ensuring it is vertically level and manually hold the bottom brackets in position while marking.

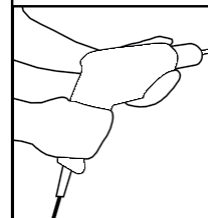
4 Fix Brackets

Volcano Single

Using a suitable drill bit and plugs fix the sleeve to the wall, firmly secure the clamp heads to the collectors.

Volcano Double

Using a suitable drill bit, screws and plugs, fix the brackets and level with a spirit level (please see diagrams).



PLEASE NOTE :

It is essential that all brackets are level and if using more than two, are square prior to hanging the radiator to ensure a vertical alignment for connecting the pipework.

5 Hang Radiator & Commission

Volcano Single

With the bracket sleeves fixed and level and the clamps heads firmly fixed to the collectors, offer up the radiator. Secure the clamp head to the sleeve.

Volcano Double

With the four wall brackets fixed and levelled, the radiator is simply lowered ensuring the welded on hooks securely locate in all four brackets.

6 Installation of Autovent

- The valve will operate faster if fitted to the hotter, flow side of the radiator.
- Use a suitable spanner to fit, but do not over-tighten.
- Although the o-ring provides sufficient seal and no tape or sealant is required, a small amount of PTFE tape must be used if preferred.
- When priming the radiator, air will bleed automatically until water reaches the valve when it will shut automatically.

After the first fill

- Dependant upon system temperature and pressure, it may take up to 48 hours for the valve to operate after the first fill.
- To drain down the radiator, once there is no internal pressure in the system, use a spanner to loosen the valve half a turn or so to allow air to enter the system.
- To refill after draining, either wait up to 6 hours for the valve to reset to automatic operation, or vent manually using a spanner.
- The valves have a guaranteed 3 year life after which, if the radiator collects air, replacements can be purchased from The Radiator Company.